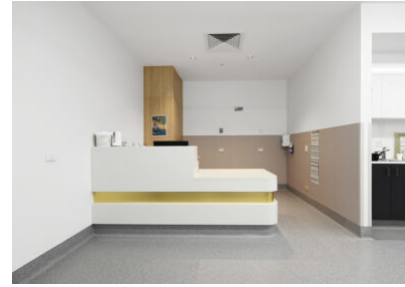


arete



Austin Health Angiography Pre-works

arete Australia proudly delivered the Angiography Pre-Works project for Austin Health, completed in three carefully managed stages.

Stage 1 focused on modifications within the Radiology Emergency Department on Level 1 of the Austin Tower. Upgrades included the addition of a dedicated wheelchair bay and the installation of two new joinery workstations, enhancing functionality and patient flow.

Stages 2 and 3, located on Level 2 of the Lance Townsend Building, involved the removal of redundant equipment storage areas, a wheelchair trolley bay, three offices, and a small sterile store. These spaces were transformed into a purpose-built Sterilizing Room, Cleanup Room, Interview Room, a larger Sterile Stock Room, and an Unpacking Area. Additionally, a new nurse base was established in the Admissions and Recovery area to support efficient patient care.

Throughout the entire project, arete Australia maintained stringent safety measures and adhered to strict infection control protocols, ensuring minimal disruption to hospital operations and the protection of patient welfare.

The final stage concluded with the construction of a new plant room and general store, reinforcing Austin Health's capacity to continue delivering high-quality patient care in a modern, well-equipped environment.

arete Australia Pty Ltd
arete.com.au

Client

Austin Health

Consultants

ClarkeHopkinsClarke
a2m Consulting
John Mullen & Partners
LCI Consulting

Value

\$430K

Victoria

Telephone +61 3 8420 1200
658 Church Street
Richmond, VIC 3121 Australia

Queensland

Telephone +61 7 3054 1555
14 Fox Street
Albion, Qld 4010 Australia